



Conservation In Action

**Winter
2025**

Your
Soil & Water
Conservation
Specialists!

Coshocton Soil and Water Conservation District

SWCD Supervisors

Beth Mullen - Chair
Greg Waters - Vice Chair
David Lapp - Secretary
Kristy Leindecker - Fiscal Agent
Jordan Olinger - Treasurer

NRCS Staff

Josh Britton - District Conservationist
Mathew Hursey - Resource Conservationist
Derrick Hill - Natural Resources Specialist

SWCD Staff

Ryan Medley - District Administrator
Kelsey Saylor - Admin. Assistant
Zach Wallace - District Technician
Michaela Savage - District Technician

Mission: Providing leadership to educate and assist landowners in the wise management of our natural resources.

Mullen Administered Oath of Office



Beth Mullen was re-elected to the Coshocton SWCD Board of Supervisors at the SWCD 82nd Annual Meeting and Banquet in October. She was sworn into her fourth term of office by David Lapp, SWCD Board Supervisor at the January SWCD Board Meeting.

SWCD Supervisors are elected by county residents and serve 3 year terms to direct the district program. Board members develop policies and set program goals for the SWCD.

Supervisor David Lapp swears in re-elected Supervisor Beth Mullen.

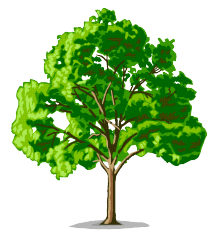
Fiscal Agent - Kristy Leindecker, and Treasurer - Jordan Olinger.

Officers for the SWCD Board of Supervisors for 2025 are: Chair - Beth Mullen, Vice Chair - Greg Waters, Secretary - David Lapp,

The SWCD program could not be successful without the dedicated support of our Board of Supervisors. Supervisors have a combined 67 years of service as volunteers on the Coshocton SWCD Board of Supervisors. Their commitment to the wise use of our soil and water resources makes our community a better place to live!

2025 Tree Seedling Sale - ORDER NOW!

It's time for our Annual Tree Seedling Sale! As in past sales, seedlings can be ordered with the form included in this newsletter. We also partner with Licking SWCD to provide an online ordering option for the sale. A link is available on the tree sale page of our website, www.coshoctonswcd.org. It will take you to Licking SWCD's website where you will be able to order seedlings from the sale, and during checkout you can choose "Coshocton" as your pick up location. You can also go to Licking SWCD's website directly to order.



We encourage you to order early because there are a set number of seedlings available for the sale. Toward the end of the sale, popular varieties tend to sell out. All orders are filled on a first-come, first-served basis. The deadline for turning in paper order forms is **Friday, March 7**. Online orders can be submitted through **Friday, March 21**, but the available varieties will be quite limited by then. The pick-up day for all orders will be **Friday, April 18** at the Coshocton SWCD Office. More information about the sale is available on our website. Contact us at (740)622-8087 x 4 or kelseysaylor@coshoctoncounty.net with any questions.

Coshocton SWCD Board Meetings

The Coshocton Soil and Water Conservation District's Board of Supervisors meets once a month. SWCD board meetings are generally held the second Wednesday of each month, December to March at 12:00 p.m. and April through November at 8:00 p.m. Unless otherwise posted, meetings are held at the SWCD office at 724 S. Seventh Street in Coshocton.

The remaining Board Meetings for 2025 are scheduled for February 12 at 12:00 p.m., March 12 at 12:00 p.m., April 9 at 8:00 p.m., May 14 at 8:00 p.m.; June 11 at 8:00 p.m., July 9 at 8:00 p.m., August 13 at 8:00 p.m., September 10 at 8:00 p.m., October 8 at 8:00 p.m., November 12 at 8:00 p.m., and December 10 at 12:00 p.m. Any meeting changes or special meetings will be posted on our website's Events page. The public is welcome at all meetings.



Coshocton SWCD Affiliate Members

Coshocton SWCD is seeking Affiliate Members for 2025. These voluntary, tax deductible contributions by individuals, businesses, and farms help the Board of Supervisors continue their efforts to educate the people of Coshocton County about protecting our natural resources. All Affiliate Members are listed in our quarterly newsletters, the special Banquet Edition newsletter, Annual Report, Annual Meeting & Banquet Program, and the District's website.

The following memberships are available: \$500 or more - DIAMOND Affiliate; \$250 to \$499 - PLATINUM Affiliate; \$100 to \$249 - GOLD Affiliate; \$50 to \$99 - SILVER Affiliate; \$25 to \$49 - BRONZE Affiliate.

Coshocton SWCD uses these funds for our education program that includes Earth Day for area 4th-6th graders, Ag Awareness Day for area 4th graders, Area 3 Envirothon for high school students, classroom presentations, teacher's conservation education desk calendars, Coshocton County Fall Foliage & Farm Tour, Coshocton County Leadership Class presentation, 5th grade poster contest, Officials Tour, First Farm Friday, and the Jr. Fair Hay Show.

Our Supervisors and Staff appreciate the generous support of the many Affiliates that have contributed to our program over the years, and we look forward to continuing our education efforts in the coming year.

2025 Affiliate Members

Diamond

Coshocton County Beacon
Eastern Ohio Ag
Judge Tim & Daphne France

Platinum

Coshocton Grain Company
Gerber & Sons, Inc.
Heritage Cooperative
Hidden Spring Farms-Tim
Rogers
Home Loan Savings Bank
McWane Ductile - Ohio
Pony Field Farm LLC

Gold

Charlie & Ruby Helmick
Cosh. Co. Chamber of Commerce

Coshocton County Farm Bureau
Coshocton Foundation
Dr. Rob & Sheri Stout and Family
Endsley Insurance Agency
Frontier Power Company
Gottlieb, Johnston, Beam & Dal Ponte
Harold's Equipment, Inc.
Hupp-Stiverson Company
Gail Piper, In Memory of Jim Piper
Larry A. Frye Farms
Lynn Wells - In Memory of Ray Griffith
McCoy Homestead, Keith & Denise
McCoy
Owens & Manning, Attorneys
Peoples Bank
Sturtz Farm - Larry & Maureen Sturtz
The Garden Patch Greenhouse
Thousand Oaks Farms
TMK Bakersville
Tumblin Farms - David Tumblin Family

WenMar Farms, Inc.
William Albert, Inc.
Wills Transport & Excavating

Silver

Baird Concrete
Cosh. Co. Engineer Fred Wachtel
Dane & Amy Shryock
Daugherty Farms
Deb Bigelow
Garber Brothers Farms LLC
Gary & Michelle Fischer
Jacobs Vanaman Agency, Inc.
Knotty Nuff Acres
Lity Scrap Yard
Scheetz Marketing
Steven Oster

Bronze

Alan Donaker Surveying
Bob & Kathy Bigrigg
Cosh. Co. Treasurer Janette Donaker
Saylor Wealth Strategies

2025 Tree Sale Order Form

Name: _____

Address: _____

Phone: _____

Email: _____



***Free Bucket
with \$200
Tree Order!**

How would you like to receive the pick-up reminder?

Postcard or E-mail

Would you like to receive our quarterly newsletter?

Yes - No - Already Receive

Mail order form
with payment to:

Coshocton SWCD
724 S. Seventh Street, Rm 120
Coshocton, OH 43812

**Paper Order Forms must be
received by March 7th and
are subject to availability.**
Online ordering will end on
March 21. Projected pick up
date is **Friday, April 18th** at
the Coshocton SWCD Office.

If you have any questions,
please call (740) 622-8087,
extension 4. More

information about the tree
sale and online ordering
information is available on
our website at

www.coshoctonswcd.org

Important Information

There is no limit on the
number of packets that can
be ordered, but **all orders are
subject to availability. Order
as soon as possible, since
there are a set number of
seedlings available.** Orders
are filled on a first-come, first-
served basis. Anyone can
order trees regardless of
county residence, but trees
*will not be delivered or
mailed.* **Payment must be
included with your order.** All
SWCDs are required to collect
sales tax. Non-profits and
farms must provide a tax
exempt form with order.

Please Indicate Quantity of Packs for Each Variety				
Native Small Trees & Shrubs, Fruit Bushes	Sapling One 2'- 4' sapling	Pack of 5 12"-18" seedlings	Pack of 25 12"-18" seedlings	Number of packets x price
	\$12.00	\$15.00	\$45.00	
Arrowwood Viburnum				\$
Black Chokeberry				\$
Pawpaw				\$
Red-Osier Dogwood				\$
Spicebush				\$
Arapaho Thornless Blackberry*		*No 5 or 25 packs available; they are ONLY saplings, 2-4'		
Fallgold Yellow Raspberry*				
Native Large Trees	Pack of 5 12"-18" seedlings	Pack of 25 6"-12" seedlings	Pack of 100 6"-12" seedlings	Number of packets x price
	\$15.00	\$40.00	\$110.00	
Black Gum				\$
Chinkapin Oak				\$
Northern Pecan	N/A			\$
Pin Oak				\$
Swamp White Oak				\$
Large Conifer Trees	Pack of 5 12"-18" seedlings	Pack of 25 6"-12" seedlings	Pack of 100 6"-12" seedlings	Number of packets x price
	\$15.00	\$35.00	\$80.00	
Eastern White Cedar				\$
White Pine				\$
Additional Items		Cost	Qty.	Qty. x price
Seed Packet: Wildflower or Erosion (<u>circle one</u>)		\$5.00		\$
Plantskydd Repellent - Powder Concentrate		\$18.56		\$
Plantskydd Repellent - Pre-mixed Spray		\$18.56		\$
*Coshocton SWCD 5 Gal Bucket w/ 2 Handles		\$15.78		\$
Tree Tube and Wood Stake		\$7.50		\$
Marking Flags <u>Circle</u> White or Pink	25	\$5.57		\$
	50	\$6.50		\$
	100	\$11.14		\$
Sub-total:		\$		
Sales Tax (Please round up at \$0.005.): Sub-total x 0.0775 =		\$		
Grand Total Enclosed: Sub-total + Sales Tax =		\$		

NATIVE SHRUBS, SMALL TREES, FRUIT BEARING



Arrowwood *Viburnum dentatum*

Mature Height: 6–15'
Mature Width: 6–15'
Growth Rate: M
Light Required: ☀️ ☁️ ☁️
Soil Moisture: D, M, W
Soil pH: A, N, B

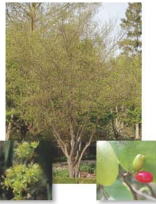
Comments/Uses: ornamental, white flowers, and blue-black berries attract pollinators



Pawpaw- *Asimina triloba*

Mature Height: 15–30'
Mature Width: 15–30'
Growth Rate: M–F
Light Required: ☀️ ☁️ ☁️
Soil Moisture: M, W
Soil pH: A, N

Comments/Uses: edible fruit, wildlife



Spicebush- *Lindera benzoin*

Mature Height: 6–12'
Mature Width: 6–15'
Growth Rate: S–M
Light Required: ☀️ ☁️ ☁️
Soil Moisture: M, W
Soil pH: A

Comments/Uses: host plant for swallowtail butterfly, pollinators, wildlife, fall foliage and fragrant



Black Chokeberry- *Aronia melanocarpa*

Mature Height: 3–6'
Mature Width: 3–6'
Growth Rate: S–M
Light Required: ☁️ ☁️ ☁️
Soil Moisture: M
Soil pH: A

Comments/Uses: fall foliage, black fruit in winter and attracts wildlife



Red Osier Dogwood- *Cornus sericea*

Mature Height: 20–30'
Mature Width: 20–25'
Growth Rate: S–M
Light Required: ☀️ ☁️ ☁️
Soil Moisture: M
Soil pH: A

Comments/Uses: spring flowers, red/burgundy fall foliage



Arapaho Thornless Blackberry- *Rubus fruticosus 'Arapaho'*

Mature Height: 4–6'
Mature Width: 3–4'
Growth Rate: S–M
Light Required: ☀️ ☁️ ☁️
Soil Moisture: M
Soil pH: A

Comments/Uses: small seeds and thornless- good for jams and syrups, pollinators

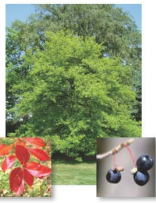


Fallgold Yellow Raspberry- *Rubus idaeus var. strigosus 'Fall Gold'*

Mature Height: 2–4'
Mature Width: 2–4'
Growth Rate: F
Light Required: ☀️
Soil Moisture: M
Soil pH: A

Comments/Uses: ever-bearing, producing golden-colored medium to large conical berries that are extremely sweet

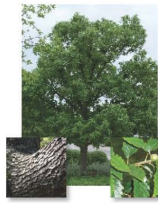
NATIVE LARGE TREES



Black Gum- *Nyssa sylvatica*

Mature Height: 60–80'
Mature Width: 20–30'
Growth Rate: S–M
Light Required: ☀️ ☁️ ☁️
Soil Moisture: M
Soil pH: A

Comments/Uses: wildlife and pollinators



Chinkapin Oak- *Quercus muehlenbergii*

Mature Height: 40–60'
Mature Width: 50–80'
Growth Rate: S–M
Light Required: ☀️ ☁️ ☁️
Soil Moisture: D, M
Soil pH: B

Comments/Uses: drought tolerant, fall foliage and wildlife



Northern Pecan- *Carya illinoensis*

Mature Height: 70–100'
Mature Width: 40–80'
Growth Rate: M
Light Required: ☀️
Soil Moisture: D, M
Soil pH: N

Comments/Uses: edible fruit, wildlife, timber



Pin Oak- *Quercus palustris*

Mature Height: 50–70'
Mature Width: 40–60'
Growth Rate: M–F
Light Required: ☀️ ☁️ ☁️
Soil Moisture: M, W
Soil pH: A

Comments/Uses: wildlife



Swamp White Oak- *Quercus bicolor*

Mature Height: 50–70'
Mature Width: 50–70'
Growth Rate: S–M
Light Required: ☀️ ☁️ ☁️
Soil Moisture: M
Soil pH: A

Comments/Uses: adaptable, bottomlands, timber, wildlife

NATIVE LARGE CONIFER TREES



Eastern White Cedar- *Thuja occidentalis*

Mature Height: 40–45'
Mature Width: 12–15'
Growth Rate: S–M
Light Required: ☀️ ☁️ ☁️
Soil Moisture: M, W
Soil pH: N

Comments/Uses: ornamental, wet footed



White Pine- *Pinus strobus*

Mature Height: 60–80'
Mature Width: 20–40'
Growth Rate: F
Light Required: ☀️
Soil Moisture: M
Soil pH: A, N

Comments/Uses: timber, windbreak, wildlife

Seedling sizes are 6 to 18 inches depending on variety; sapling varieties are approximately 2 to 4 feet tall. All trees are state/federally inspected and are bare root seedlings. Reasonable substitutions may be made based on availability. Due to the number of variables involved, we do not guarantee the success of the seedlings once they are in your possession. The District does not offer reimbursements for trees that do not survive.

Marking Flags: Available in pink or white; each flag is 2.5" x 3.5" on a 30" wire. Helps with locating seedlings.

Tree Tube and Wood Stake: A 4' tube with wood stake that can improve seedling survival and reduce wildlife damage. They also make seedlings easier to see in tall grass. Anticipated lifespan of the tube is 5–7 years.

Plantskydd Repellent: Contains 1 pound of powder concentrate that will treat over 200 plants or 1 quart of pre-mixed spray that will treat around 100 plants. Plantskydd can help prevent damage from browsing wildlife.

Wildflower Seeds: 1 ounce of seeds per packet that plants 100 to 200 square feet. Mix includes a variety of perennials, grasses, and showy annuals.

Growth Rate:

F = fast, 12"+ per year,
M = medium 6–12" per year,
S = slow 2–6" per year

Light Required:

S = sun ☀️
P = part sun/shade ☁️
SH = shade ☁️

Soil Moisture:

D = dry, M = medium, W = wet

Soil pH:

A = acidic (6.5 or less),
N = normal pH range (6.5–7.5),
B = basic/alkaline (7.5+)



United States
Department of
Agriculture

Natural Resources Conservation Service

NRCS: It Pays to Work with Us

The Environmental Quality Incentives Program (EQIP) can help agricultural producers and forest managers meet conservation needs.

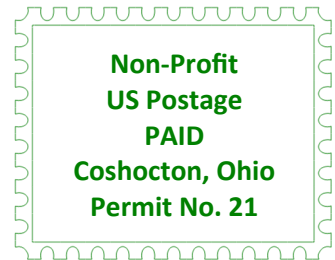
Livestock and Pasture Practices		Cropland Practices	
Brush Management, per acre	\$40.15 to \$153.32	Liquid Agrichemical Storage, per sqft	\$15.24
Weed Control, per acre	\$46.28	Agrichemical Mixing and Loading Pad, per sqft	\$9.60
Fence, High Tensile, per foot	\$2.00	No-Till, per acre	\$16.22
Water Line, per foot	\$2.15	Controlled Traffic Farming, per acre	\$15.76
Access Road, per foot	\$12.64	Grassed Waterway with Erosion Blanket, per acre	\$9,906.47 to \$10,539.58
Concrete Feed Pad, per sqft	\$6.10	Cover Crop, per acre	\$60.64
Manure Dry Stack Roofed, per sqft	\$19.12 to \$25.38	Nutrient Management	\$29.09 to \$62.30
Spring Development	\$4,307.24	Conversion to Hay or Pasture	\$284.87
Watering Tank/Automatic Waterer	\$1,060.78	Biochar and Compost, per acre	\$550.84
Rotational Grazing , per acre	\$36.47 to \$52.37	Wildlife Habitat Practices	
Interseeding Legumes, per acre	\$185.32	Forest Edge Improvement, per acre	\$532.41 to \$1,000.89
Forestry Practices		Brush Pile, per pile	\$32.25
Forest Management Plan, per plan	\$1,205.37 to \$2918.26	Vernal Pools	\$951.81
Forest Stand Improvement, per acre	\$123.88 to \$160.34	Forest Thinning for Wildlife	\$519.27
Woody Invasive Control, per acre	\$85.23 to \$618.45	Patch Clearcuts, per acre	\$276.79
Non-woody Invasive Control, per acre	\$46.28	Prairie Planting, per acre	\$224.60
Tree planting with Shelters	\$3,287.44	Pollinator Planting, per acre	\$525.95
Maple Syrup Energy Practices		Bluebird Nest Box with Pole	\$58.81
Evaporator Improvements, per sqft	\$491.01 to \$874.98	Large Nest Box (Wooducks, Owls, Bats)	\$108.84
Sap Preheater, per sqft	\$187.24		
Reverse Osmosis, per gal/hr	\$16.40 to \$33.71		

For more information, contact the Coshocton NRCS at 740-622-8087 x3, or by stopping at the office.

*Incentive payment rates above based on 2024 program and typical scenarios.
Rates subject to change and dependent on program approval.*

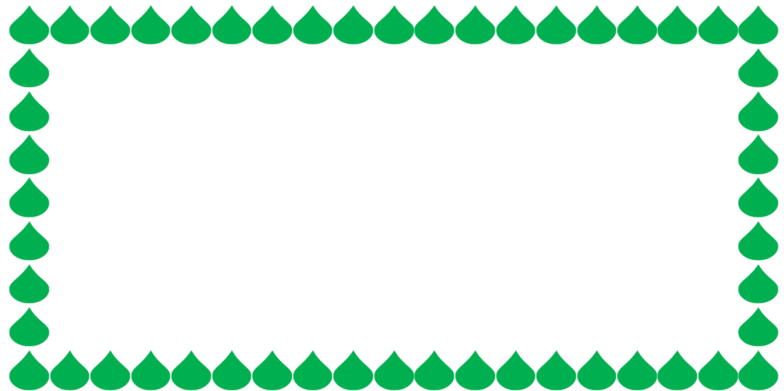
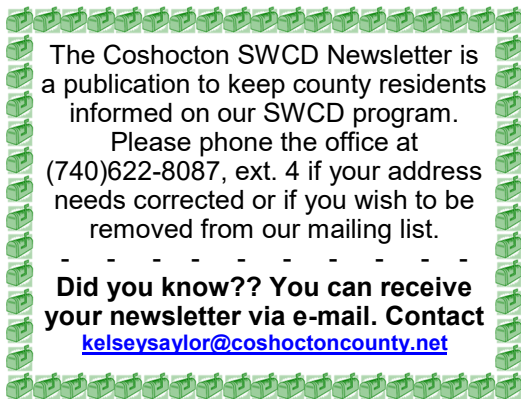
**Coshocton Soil and Water
Conservation District**
724 South Seventh Street
Coshocton, Ohio 43812
(740) 622-8087, ext. 4

 www.coshoctonswcd.org
facebook.com/CoshoctonSWCD



**Tree sale order form inside,
order before March 7th!**

RETURN SERVICE REQUESTED



Coshocton SWCD and USDA-NRCS are equal
opportunity employers and providers.



Doors open at 11:30 a.m. Lunch at 11:45 a.m. Adjourn at 1:00 p.m.

Guest Speakers Seth Gerber and Travis Hahn

Meal by Schumaker Farms Cost: \$10.00 RSVP by March 11

With over 100 local farmers and supporters in attendance last year, we are excited to hold the event at the Lake Park Pavilion again with a delicious meal prepared by Schumaker Farms and discussing our theme, Together We Grow!

Please join us as we recognize the contributions of today's farmers and show our appreciation for the men and women of agriculture with guest speakers Seth Gerber and Travis Hahn from Gerber and Sons Inc. discussing their local growing business.

This event is sponsored by Farm Credit Mid-America, Coshocton Soil & Water Conservation District, and OSU Extension.

RSVP to 740-622-8087, ext. 4 or kelseysaylor@coshoctoncounty.net.

Ag Day Celebration Luncheon

Tuesday, March 18, 2025

Lake Park Pavilion,
23253 State Route 83,
Coshocton, OH 43812

Calendar of Events

February 12
SWCD Board Mtg,
12:00 p.m.

February 17
Presidents' Day,
Office Closed

March 7
Tree Sale Paper Order
Form Deadline

March 12
SWCD Board Mtg,
12:00 p.m.

March 21
Tree Sale Online
Order Deadline

April 9
SWCD Board Mtg,
8:00 p.m.

April 18
Tree Sale Order
Pick Up