

This property is subject to all easements, rights-of-way or restrictions, whether recorded or implied.

CIT-10-0121

VEYING

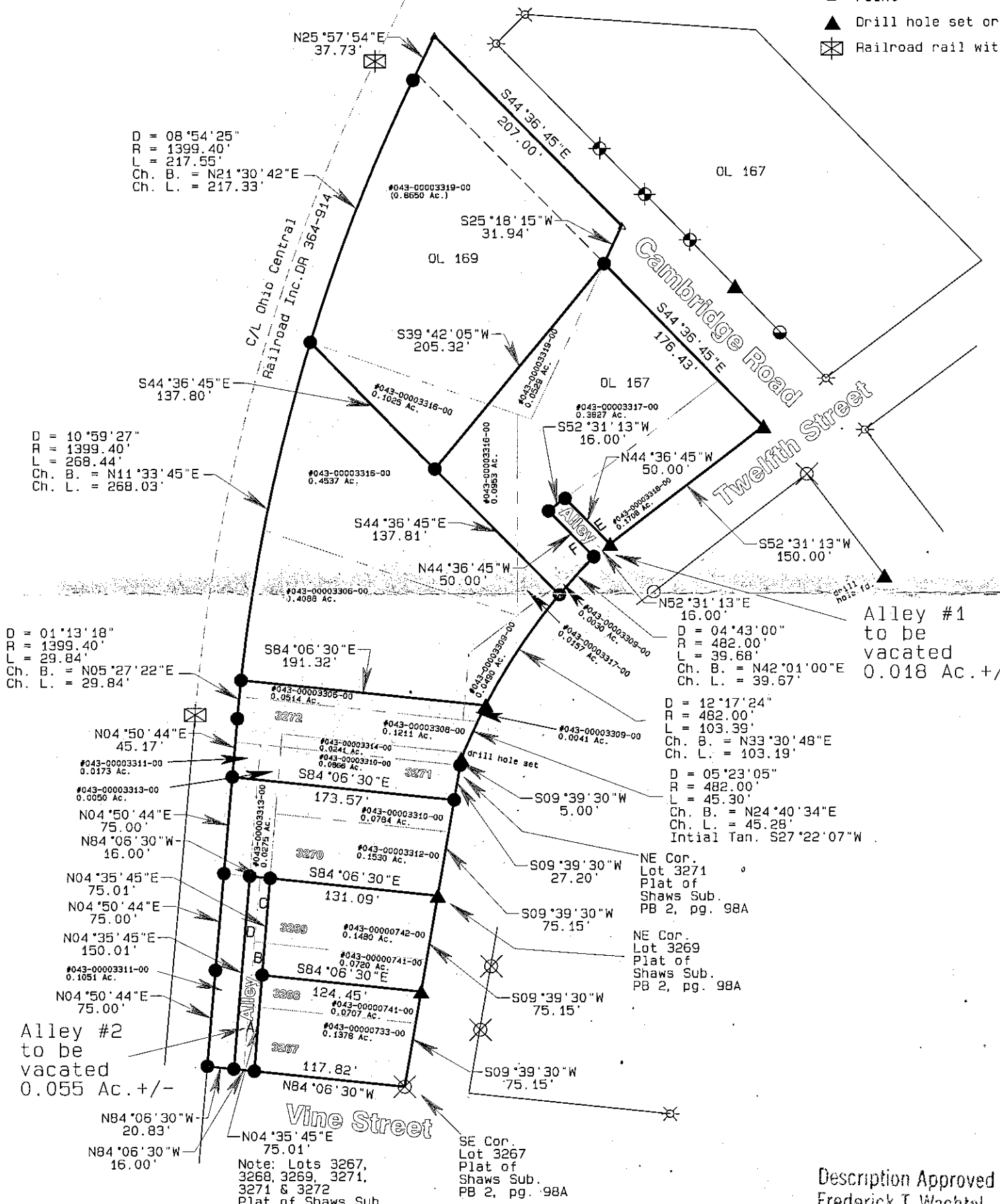
3843
327-7001
1083

Pertinent Documents: Tax Map
All Deeds and Plats Shown

Surveys by: Earl R. Donaker,
James V. Gute, Harold W.
Hitchens Jr., Roland L.
Marx, R. Scott Johnson,
Alan Donaker

Bearings are based on
OH 506-17 and are for
angular calculations only

- All 5/8" rebars set are 30" long with plastic cap marked "AMD" 8050
- 5/8" rebar found
- 1/2" pipe found
- ⊗ 3/4" pipe found
- ⊗ 1" pipe found
- ⊗ Concrete monument found
- ⊗ Railroad spike set
- △ Point
- ▲ Drill hole set or as marked
- ⊗ Railroad rail with +



D = 01°13'18"
R = 1399.40'
L = 29.84'
Ch. B. = N05°27'22"E
Ch. L. = 29.84'

D = 08°54'25"
R = 1399.40'
L = 217.55'
Ch. B. = N21°30'42"E
Ch. L. = 217.33'

D = 10°59'27"
R = 1399.40'
L = 268.44'
Ch. B. = N11°33'45"E
Ch. L. = 268.03'

D = 01°13'18"
R = 1399.40'
L = 29.84'
Ch. B. = N05°27'22"E
Ch. L. = 29.84'

D = 01°13'18"
R = 1399.40'
L = 29.84'
Ch. B. = N05°27'22"E
Ch. L. = 29.84'

D = 01°13'18"
R = 1399.40'
L = 29.84'
Ch. B. = N05°27'22"E
Ch. L. = 29.84'

D = 01°13'18"
R = 1399.40'
L = 29.84'
Ch. B. = N05°27'22"E
Ch. L. = 29.84'

D = 01°13'18"
R = 1399.40'
L = 29.84'
Ch. B. = N05°27'22"E
Ch. L. = 29.84'

D = 01°13'18"
R = 1399.40'
L = 29.84'
Ch. B. = N05°27'22"E
Ch. L. = 29.84'

D = 01°13'18"
R = 1399.40'
L = 29.84'
Ch. B. = N05°27'22"E
Ch. L. = 29.84'

D = 01°13'18"
R = 1399.40'
L = 29.84'
Ch. B. = N05°27'22"E
Ch. L. = 29.84'

D = 01°13'18"
R = 1399.40'
L = 29.84'
Ch. B. = N05°27'22"E
Ch. L. = 29.84'

D = 01°13'18"
R = 1399.40'
L = 29.84'
Ch. B. = N05°27'22"E
Ch. L. = 29.84'

NOTE:

- A - 0.009 Ac. to #043-00000733-00
- B - 0.009 Ac. to #043-00000741-00
- C - 0.009 Ac. to #043-00000742-00
- D - 0.028 Ac. to #043-00003311-00
- E - 0.009 Ac. to #043-00003318-00
- F - 0.009 Ac. to #043-00003317-00

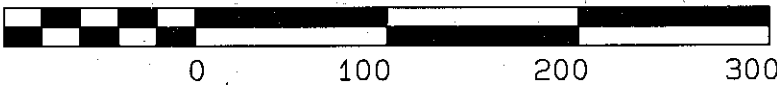
Description Approved
Frederick T. Wachtel
Coshocton County Engineer

Approved By: *FL* Date: 11/15/12



I, Alan Donaker, P.S. 8050, hereby certify this plat to represent a boundary survey pursuant to Chapter 4733.37 Ohio Administrative Code and to be correct to the best of my knowledge and belief.

GRAPHIC SCALE 1"=100'



Vacation Plat of 2 Alleys
Out Lot 167 &
Plat of Shaws Sub.
PB 2, pg. 98A
First Qtr., T5N, R6W
United States Military Lands
City of Coshocton
Coshocton County, Ohio
Date: (Field work
October 9, 2012)
November 9, 2012

ALAN DONAKER SURVEYING

Alan Donaker, P.S.

19849 TR 383

Walhonding, OH 43843

Fax: (740) 327-1083

Phone: (740) 327-7001

Alley #1 (To be vacated)

Being 0.018 acres, more or less, in Out Lot 167, in the First Quarter, T5N, R6W, United States Military Lands, in the City of Coshocton, in the County of Coshocton, in the State of Ohio, and more particularly described as follows:

Commencing at a $\frac{5}{8}$ " rebar set at the Northeast corner of Lot 3271, Plat of Shaws Subdivision, Plat Book 2, page 98A:

thence, with the West line of Twelfth Street, the following 4 courses:

1. thence, N. $09^{\circ} 39' 30''$ E. a distance of 5.00' to a drill hole set;
2. thence, with a curve to the right (non-tangent), the curve data for which is:
D = $05^{\circ} 23' 05''$, R = 482.00', L = 45.30', Ch. B. N. $24^{\circ} 40' 34''$ E., Ch. L. 45.28' to a drill hole set;
3. thence, with a curve to the right (non-tangent), the curve data for which is:
D = $12^{\circ} 17' 24''$, R = 482.00', L = 103.39', Ch. B. N. $33^{\circ} 30' 48''$ E., Ch. L. 103.19' to a $\frac{5}{8}$ " rebar set;
4. thence, with a curve to the right (non-tangent), the curve data for which is:
D = $04^{\circ} 43' 00''$, R = 482.00', L = 39.68', Ch. B. N. $42^{\circ} 01' 00''$ E., Ch. L. 39.67' to a $\frac{5}{8}$ " rebar set, said rebar being the TRUE POINT OF BEGINNING:

thence, with the property line of Cosho, Inc., OR 478-677 {The Pretty-Scheffer Company, DR 157-601}, the following 2 courses:

1. thence, N. $44^{\circ} 36' 45''$ W. a distance of 50.00' to a $\frac{5}{8}$ " rebar set;
2. thence, N. $52^{\circ} 31' 13''$ E. a distance of 16.00' to a $\frac{5}{8}$ " rebar set;

thence, with the property line of Cosho, Inc., OR 478-677 {The Pretty-Scheffer Company, DR 187-448}, S. $44^{\circ} 36' 45''$ E. a distance of 50.00' to a $\frac{5}{8}$ " drill hole set;

thence, with the West line of Twelfth Street, S. $52^{\circ} 31' 13''$ W. a distance of 16.00' to the TRUE POINT OF BEGINNING, containing 0.018 acres, more or less, and is subject to all easements, rights-of-way, or restrictions, whether recorded or implied.

Bearings are based on OR 506-17 and are for angular calculations only.

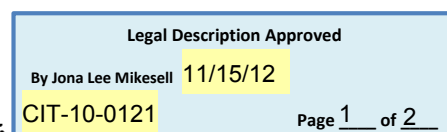
All $\frac{5}{8}$ " rebars set are 30" long with plastic cap marked "AMD 8050".

Pertinent Documents: Tax Map and all Deeds and Plats shown

Surveys by: Earl R. Donaker, James V. Gute, Harold W. Hitchens, Jr., Rolland L. Marx, R. Scott Johnson, Alan Donaker

Description and plat by Alan Donaker, Professional Surveyor, #8050, from a survey of the premises on November 9, in the year of our Lord Two Thousand Twelve. (Field Work 10/09/12)

Alan Donaker 11/09/12



ALAN DONAKER SURVEYING

Alan Donaker, P.S.

19849 TR 383

Walhonding, OH 43843

Fax: (740) 327-1083

Phone: (740) 327-7001

Alley #2 (To be vacated)

Being 0.055 acres, more or less, in the Plat of Shaws Subdivision, Plat Book 2, page 98A, in the First Quarter, T5N, R6W, United States Military Lands, in the City of Coshocton, in the County of Coshocton, in the State of Ohio, and more particularly described as follows:

Commencing at a $\frac{3}{4}$ " pipe found at the Southeast corner of Lot 3267, Plat of Shaws Subdivision, Plat Book 2, page 98A;

thence, with the North line of Vine Street, N. $84^{\circ} 06' 30''$ W. a distance of 117.82' to a $\frac{5}{8}$ " rebar set, said rebar being the TRUE POINT OF BEGINNING:

thence, with the North line of Vine Street, N. $84^{\circ} 06' 30''$ W. a distance of 16.00' to a $\frac{5}{8}$ " rebar set;

thence, with the East and South line of Lot 3272, Plat of Shaws Subdivision, Plat Book 2, page 98A, the following 2 courses:

1. thence, N. $04^{\circ} 35' 45''$ E. a distance of 150.01' to a $\frac{5}{8}$ " rebar set;
2. thence, S. $84^{\circ} 06' 30''$ E. a distance of 16.00' to a $\frac{5}{8}$ " rebar set;

thence, with the West lines of Lot 3269, 3268 and 3267, Plat of Shaws Subdivision, Plat Book 2, page 98A, the following 2 courses:

1. thence, S. $04^{\circ} 35' 45''$ W. a distance of 75.01' to a $\frac{5}{8}$ " rebar set;
2. thence, S. $04^{\circ} 35' 45''$ W. a distance of 75.01' to the TRUE POINT OF BEGINNING, containing 0.055 acres, more or less, and is subject to all easements, rights-of-way, or restrictions, whether recorded or implied.

Bearings are based on OR 506-17 and are for angular calculations only.

All $\frac{5}{8}$ " rebars set are 30" long with plastic cap marked "AMD 8050".

Pertinent Documents: Tax Map and all Deeds and Plats shown

Surveys by: Earl R. Donaker, James V. Gute, Harold W. Hitchens, Jr., Rolland L. Marx, R. Scott Johnson, Alan Donaker

Description and plat by Alan Donaker, Professional Surveyor, #8050, from a survey of the premises on November 9, in the year of our Lord Two Thousand Twelve. (Field Work 10/09/12)

Alan Donaker 11/09/12

