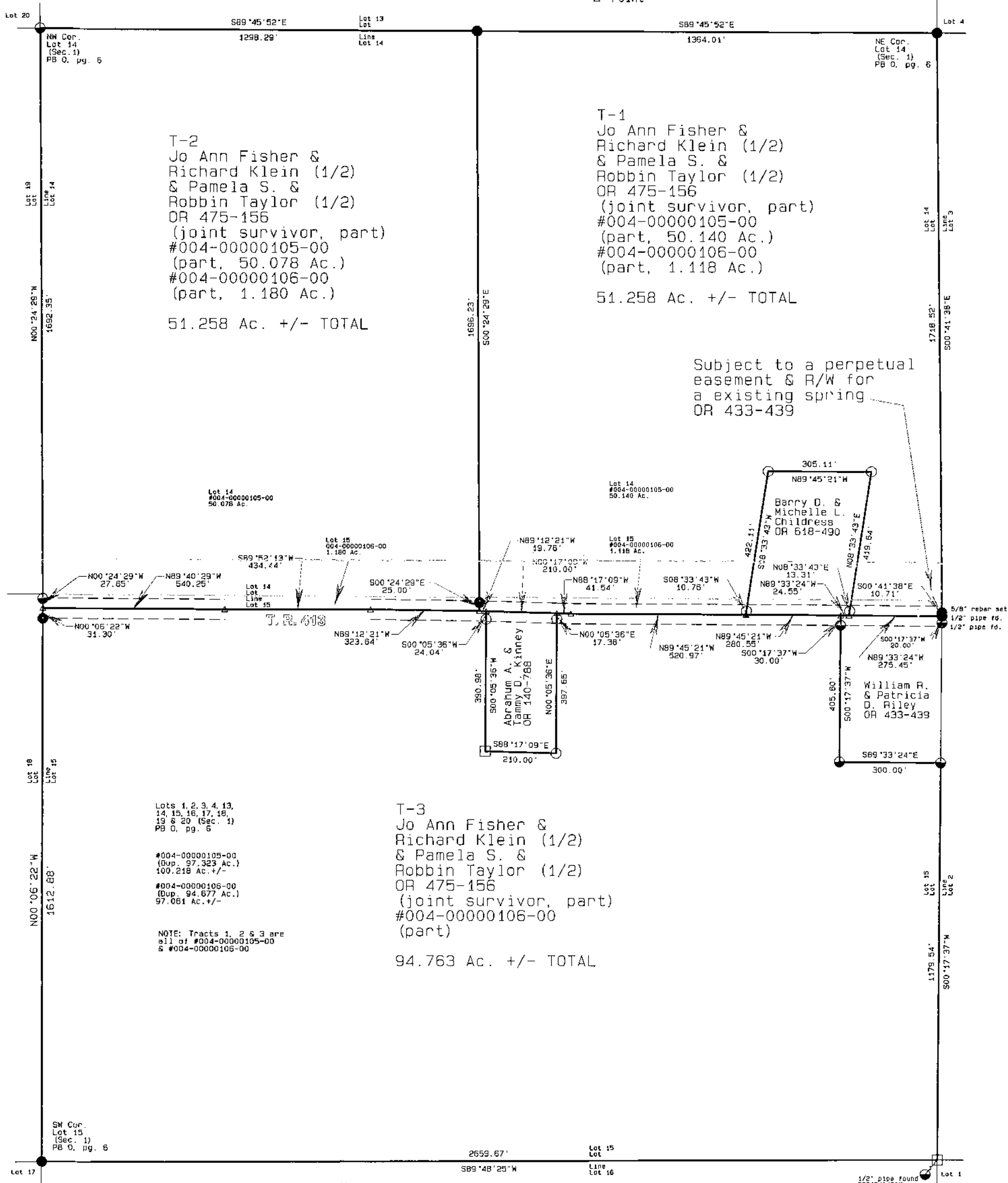


This property is subject to all easements, rights-of-way or restrictions, whether recorded or implied

ALAN DONAKER
19849 TR 383
Walhonding, OH 43843
Telephone: (740) 327-7001
Fax: (740) 327-1083

Pertinent Documents: Tax Map
All Deeds and Plats Shown
Surveys by: Alan Donaker,
James V. Gute, Earl R. Donaker
Bearings are based on
OR 68-1085 and are for
angular calculations only

- All 5/8" rebar set are 30" long with plastic cap marked "AMD" 8050
- 5/8" rebar found
- 1/2" pipe found
- Stone found
- △ Point

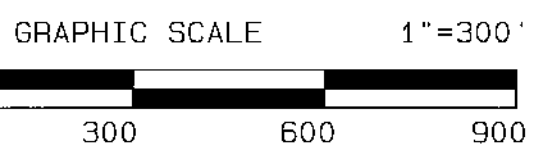


I, Alan Donaker, P. S. 8050, hereby certify this plat to represent a boundary survey pursuant to Chapter 4733.37 Ohio Administrative Code and to be correct to the best of my knowledge and belief.



Plat & Legal Description
Approval
Coshocton County Engineer

Approved By: *[Signature]* Date: 11/22/13



Jo Ann Fisher & Richard Klein (1/2)
Pamela S. & Robbin Taylor (1/2)
OR 475-156 (joint survivor)
51.258 Ac. +/- 51.258 Ac. +/- &
94.763 Ac. +/-
Lots 14 & 15, PB 0, pg. 6
First Qtr., T6N, R7W
United States Military Lands
Bethlehem Township
Coshocton County, Ohio
Date: October 17, 2013

ALAN DONAKER SURVEYING

Alan Donaker, P.S.

19849 TR 383

Walhonding, OH 43843

Fax: (740) 327-1083

Phone: (740) 327-7001

T-1

Being 51.258 acres, more or less, 50.140 acres in Lot 14 and 1.118 acres in Lot 15 (Section 1, Plat Book O, page 6) in the First Quarter of Township 6 North, Range 7 West, United States Military Lands, in Township of Bethlehem, in the County of Coshocton, in the State of Ohio, conveyed to Jo Ann Fisher and Richard Klein (1/2) and Pamela S. and Robbin Taylor (1/2), OR 475-156 (joint survivor, part), Parcel No. 004-00000105-00 (part, 50.140 acres) and Parcel No. 004-00000106-00 (part, 1.118 acres) and more particularly described as follows:

Commencing at a 5/8" rebar set at the Northeast corner of Lot 14 (Section 1, Plat Book O, page 6), said rebar being the TRUE POINT OF BEGINNING:

thence, with the West line of Lot 3 (Section 1, Plat Book O, page 6), the following 2 courses:

1. thence, S. 00° 41' 38" E. a distance of 1718.52' to a 5/8" rebar set;
2. thence, S. 00° 41' 38" E. a distance of 10.71' to a 1/2" pipe found in the centerline of Township Road 413;

thence, with the centerline of Township Road 413, N. 89° 33' 24" W. a distance of 275.45' to a point;

thence, with the property line of Barry D. and Michelle L. Childress, OR 618-490, the following 5 courses:

1. thence, N. 08° 33' 43" E. a distance of 13.31' to a 5/8" rebar found;
2. thence, N. 08° 33' 43" E. a distance of 419.64' to a 5/8" rebar found;
3. thence, N. 89° 45' 21" W. a distance of 305.11' to a 5/8" rebar found;
4. thence, S. 08° 33' 43" W. a distance of 422.11' to a 5/8" rebar found;
5. thence, S. 08° 33' 43" W. a distance of 10.76' to a point in the centerline of Township Road 413;

thence, with the centerline of Township Road 413, the following 4 courses:

1. thence, N. 89° 45' 21" W. a distance of 520.97' to a point;
2. thence, N. 88° 17' 09" W. a distance of 41.54' to a point;
3. thence, N. 88° 17' 09" W. a distance of 210.00' to a point;
4. thence, N. 89° 12' 21" W. a distance of 19.76' to a point;

thence, through the property of Jo Ann Fisher and Richard Klein and Pamela S. and Robbin Taylor, OR 475-156, the following 2 courses:

1. thence, N. 00° 24' 29" W. a distance of 25.00' to a 5/8" rebar set;
2. thence, N. 00° 24' 29" W. a distance of 1696.23' to a 5/8" rebar set;

thence, with the South line of Lot 13 (Section 1, Plat Book O, page 6), S. 89° 45' 52" E. a distance of 1364.01' to the TRUE POINT OF BEGINNING, containing 51.258 acres, more or less, including Public Road Right-of-Way and is subject to all easements, rights-of-way, or restrictions, whether recorded or implied.

Subject to a perpetual easement and Right-of-Way for an existing spring as recorder in OR 433-439.

Survey Plat is on file at the Coshocton County Engineers Map Office.

Bearings are based on OR 68-1085 and are for angular calculations only.

All 5/8" rebars set are 30" long with plastic cap marked "AMD 8050".

Pertinent Documents: Tax Map and all Deeds and Plats shown

Surveys by: Alan Donaker, James V. Gute, Earl R. Donaker

Description and plat by Alan Donaker, Professional Surveyor, #8050, from a survey of the premises on October 17, in the year of our Lord Two Thousand Thirteen.

Alan Donaker 10/17/13

Plat & Legal Description
Approval
Coshocton County Engineer
pg 2 of 3
Approved By: *Jm* Date: *11/22/13*



ALAN DONAKER SURVEYING

Alan Donaker, P.S.

19849 TR 383

Walhonding, OH 43843

Fax: (740) 327-1083

Phone: (740) 327-7001



T-2

Being 51.258 acres, more or less, 50.078 acres in Lot 14 and 1.180 acres in Lot 15 (Section 1, Plat Book O, page 6) in the First Quarter of Township 6 North, Range 7 West, United States Military Lands, in Township of Bethlehem, in the County of Coshocton, in the State of Ohio, conveyed to Jo Ann Fisher and Richard Klein (½) and Pamela S. and Robbin Taylor (½), OR 475-156 (joint survivor, part), Parcel No. 004-00000105-00 (part, 50.078 acres) and Parcel No. 004-00000106-00 (part, 1.180 acres) and more particularly described as follows:

Commencing at a ½" pipe found at the Northwest corner of Lot 14 (Section 1, Plat Book O, page 6), said pipe being the TRUE POINT OF BEGINNING:

thence, with the South line of Lot 13 (Section 1, Plat Book O, page 6), S. 89° 45' 52" E. a distance of 1298.29' to a ¾" rebar set;

thence, through the property of Jo Ann Fisher and Richard Klein and Pamela S. and Robbin Taylor, OR 475-156, the following 2 courses:

1. thence, S. 00° 24' 29" E. a distance of 1696.23' to a ¾" rebar set;
2. thence, S. 00° 24' 29" E. a distance of 25.00' to a point in the centerline of Township Road 413;

thence, with the centerline of Township Road 413, the following 3 courses:

1. thence, N. 89° 12' 21" W. a distance of 323.64' to a point;
2. thence, S. 89° 52' 13" W. a distance of 434.44' to a point;
3. thence, N. 89° 40' 29" W. a distance of 540.25' to a point;

thence, with the East line of Lot 19 (Section 1, Plat Book O, page 6), the following 2 courses:

1. thence, N. 00° 24' 29" W. a distance of 27.65' to a ½" pipe found;
2. thence, N. 00° 24' 29" W. a distance of 1692.35' to the TRUE POINT OF BEGINNING, containing 51.258 acres, more or less, including Public Road Right-of-Way and is subject to all easements, rights-of-way, or restrictions, whether recorded or implied.

Survey Plat is on file at the Coshocton County Engineers Map Office.

Bearings are based on OR 68-1085 and are for angular calculations only.

All 5/8" rebars set are 30" long with plastic cap marked "AMD 8050".

Pertinent Documents: Tax Map and all Deeds and Plats shown

Surveys by: Alan Donaker, James V. Gute, Earl R. Donaker

Description and plat by Alan Donaker, Professional Surveyor, #8050, from a survey of the premises on October 17, in the year of our Lord Two Thousand Thirteen.

Alan Donaker 10/17/13

ALAN DONAKER SURVEYING

Alan Donaker, P.S.

19849 TR 383

Walhonding, OH 43843

Fax: (740) 327-1083

Phone: (740) 327-7001

T-3

Being 94.763 acres, more or less, in Lot 15 (Section 1, Plat Book O, page 6) in the First Quarter of Township 6 North, Range 7 West, United States Military Lands, in Township of Bethlehem, in the County of Coshocton, in the State of Ohio, conveyed to Jo Ann Fisher and Richard Klein (½) and Pamela S. and Robbin Taylor (½), OR 475-156 (joint survivor, part), Parcel No. 004-00000106-00 (part) and more particularly described as follows:

Commencing at a ⅝" rebar set at the Southwest corner of Lot 15 (Section 1, Plat Book O, page 6), said rebar being the TRUE POINT OF BEGINNING:

thence, with the East line of Lot 18 (Section 1, Plat Book O, page 6), the following 2 courses:

1. thence, N. 00° 06' 22" W. a distance of 1612.88' to a ⅝" rebar set;
2. thence, N. 00° 06' 22" W. a distance of 31.30' to a point in the centerline of Township Road 413;

thence, with the centerline of Township Road 413, the following 4 courses:

1. thence, S. 89° 40' 29" E. a distance of 540.25' to a point;
2. thence, N. 89° 52' 13" E. a distance of 434.44' to a point;
3. thence, S. 89° 12' 21" E. a distance of 323.64' to a point;
4. thence, S. 89° 12' 21" E. a distance of 19.76' to a point;

thence, with the property line of Abraham A. and Tammy D. Kinney, OR 140-788 the following 5 courses:

1. thence, S. 00° 05' 36" W. a distance of 24.04' to a ⅝" rebar found;
2. thence, S. 00° 05' 36" W. a distance of 390.98' to a stone found;
3. thence, S. 88° 17' 09" E. a distance of 210.00' to a ⅝" rebar found;
4. thence, N. 00° 05' 36" E. a distance of 397.65' to a ⅝" rebar found;
5. thence, N. 00° 05' 36" E. a distance of 17.38' to a point in the centerline of Township Road 413;

thence, with the centerline of Township Road 413, the following 3 courses:

1. thence, S. 88° 17' 09" E. a distance of 41.54' to a point;
2. thence, S. 89° 45' 21" E. a distance of 520.97' to a point;
3. thence, S. 89° 45' 21" E. a distance of 280.55' to a point;

thence, with the property line of William R. and Patricia D. Riley, OR 433-439 the following 3 courses:

1. thence, S. 00° 17' 37" W. a distance of 30.00' to a ½" pipe found;
2. thence, S. 00° 17' 37" W. a distance of 405.60' to a ½" pipe found;
3. thence, S. 89° 33' 24" E. a distance of 300.00' to a ½" pipe found;

thence, with the West line of Lot 2 (Section 1, Plat Book O, page 6), S. 00° 17' 37" W. a distance of 1179.54' to a stone found (½" pipe found, S38°24'43"W a distance of 0.48');

thence, with the North line of Lot 16 (Section 1, Plat Book O, page 6), S. 89° 48' 25" W. a distance of 2659.67' to the TRUE POINT OF BEGINNING, containing 94.763 acres, more or less, including Public Road Right-of-Way and is subject to all easements, rights-of-way, or restrictions, whether recorded or implied.

Survey Plat is on file at the Coshocton County Engineers Map Office.

Bearings are based on OR 68-1085 and are for angular calculations only.

All 5/8" rebars set are 30" long with plastic cap marked "AMD 8050".

Pertinent Documents: Tax Map and all Deeds and Plats shown

Surveys by: Alan Donaker, James V. Gute, Earl R. Donaker

Description and plat by Alan Donaker, Professional Surveyor, #8050, from a survey of the premises on October 17, in the year of our Lord Two Thousand Thirteen.

Alan Donaker 10/17/13

Plat & Legal Description
Approval
Coshocton County Engineer
Pg 2 of 3
Approved By: *Jw* Date: 11/22/13

